

SPECIFICATIONS

ELECTRICAL

FREQUENCY RANGE _____ DC TO 26.5 GHz

VSWR(MAX)
 DC - 4 GHz _____ 1.10:1
 4 - 8 GHz _____ 1.15:1
 8 - 12 GHz _____ 1.20:1
 12 - 18 GHz _____ 1.30:1
 18 - 26.5 GHz _____ 1.50:1

POWER (AVG) _____ 2 WATTS
 DERATED LINERARLY TO 10% AT +125 °C

IMPEDANCE _____ 50 OHMS

MECHANICAL:

OPERATING TEMP RANGE _____ -65 TO +125°C

MATERIAL:

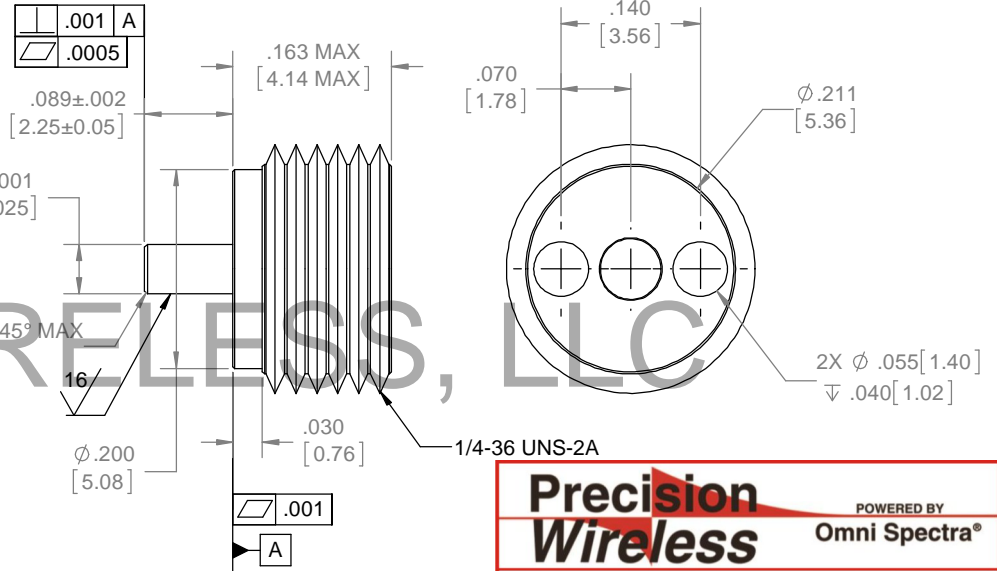
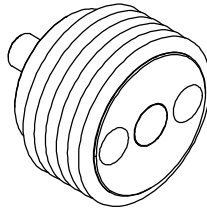
OUTER CONDUCTOR _____ STAINLESS STEEL IAW ASTM-A484 & ASTM A582, ALLOY 303, COND. A
 CENTER CONDUCTOR _____ BERYLLIUM COPPER ALLOY C17200 OR C17300 IAW ASTM B196, COND 1/2 H
 DIELECTRIC _____ PRFE (VIRGIN TEFLON) IAW ASTM-D1710-91a, TYPE 1, GRADE 1, CLASS A

FINISHES:

OUTER CONDUCTOR _____ NICKEL PLATE PER QQ-N-290, CLASS 2, .000100/.000150 THICK OVER COPPER FLASH PER MIL-C-14550.
 CENTER CONDUCTOR _____ GOLD PLATE PER ASTM-B488 OR MIL-G-45204, TYPE II, GRADE C, .00010/.000150 THICK OVER NICKEL PLATE PER QQ-N-290, CLASS 2, .000100/.000150 THICK OVER COPPER FLASH PER MIL-C-14550 (COPPER FLASH OPTIONAL)

MARKING

PART IS UNMARKED



Precision Wireless POWERED BY **Omni Spectra®**
 外来文件受控章

REVISIONS				
REV	DESCRIPTION	ECO #	DATE	APPROVED
-	INITIAL RELEASE	14-373	11/5/14	T.KUHN

QTY.	PART NUMBER	DESCRIPTION	ITEM NO.
X	HT18EMS	TERMINATION, THREAD-IN, 2W	
1	TA-9501-5003-10U	ASSY, TERMINATION, THREAD-IN, 2W, UNMARKED	1

DRAWING PRACTICES PER ANSI-Y-14.5 MIL-STD-100 & 1000
 DIMENSIONS ARE IN INCHES AND APPLY BEFORE / AFTER PROCESSING
 SURFACE ROUGHNESS $\sqrt{63}$ INCHES
 FINISH:
 SEE NOTES
 MATERIAL:
 SEE NOTES
 NOTE:
 THIS DRAWING INCORPORATES THIRD ANGLE PROJECTION.
 INTERPRET IAW ANSI Y14.5-1982

UNLESS OTHERWISE SPECIFIED TOLERANCES IN:
 DECIMALS INCH [MM]
 .X" .05" [1.27]
 .XX" .03" [.76]
 .XXX" .010" [.25]
 ANGLES ±0°30'
 REMOVE ALL BURRS/SHARP W/ BREAK / R OF .003" TO .0005" UNLESS OTHERWISE NOTED DIAS CONCENTRIC <.003 T.I.R.
 DO NOT SCALE PRINT

DRAWN DATE
MCCORMICK 11/5/14
 CHECKED DATE
MCCORMICK 11/5/14
 ENG. APPR. DATE
T.KUHN 11/5/14

XMA POWERED BY Omni Spectra®
 Phone: 603-222-2256 Fax: 603-222-2259
 150 Dow Street, Manchester, NH 03101
 TITLE

TERMINATION, THREAD-IN, 2W			
SIZE	CAGE CODE	DRAWING NUMBER	REV
B	3HT76	HT18EMS	-
SCALE	PLATED AREA SQ. IN	SHEET 1 OF 1	