

4

3

2

1

SPECIFICATIONS

ELECTRICAL

FREQUENCY RANGE	DC - 50 GHz		
STANDARD dB VALUES	1 THRU 10, 20 & 30 dB		
ATTENUATION ACCURACY	DC - 26.5 GHz	26.5 - 40 GHz	40 - 50 GHz
1 THRU 10 dB	±0.5 dB	±1.0 dB	±1.5 dB
20 & 30 dB	±0.75 dB	±1.25 dB	±2.0 dB
VSWR (MAX)	DC-26.5 GHz	26.5 - 40 GHz	40 - 50 GHz
	<1.35	<1.60	<1.75
POWER (AVG. MAX.)	1 WATT @ 25°C		
	DERATES LINEARLY TO 10% AT +100°C		
IMPEDANCE	50 OHMS		
OPERATING/STORAGE TEMPERATURE RANGE	-55 TO +100°C		

MATERIAL

HOUSING	STAINLESS STEEL IAW ASTM-A484 & ASTM-A582, ALLOY 303, COND A
CONTACT	BERYLLIUM COPPER
DIELECTRIC	HIGH TEMPERATURE PLASTIC BEAD

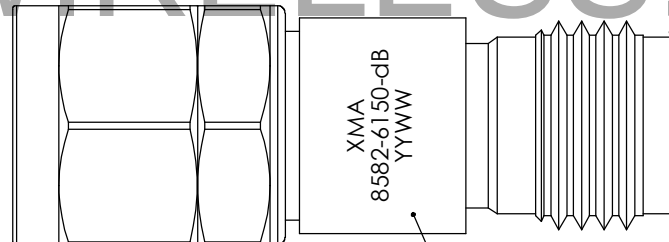
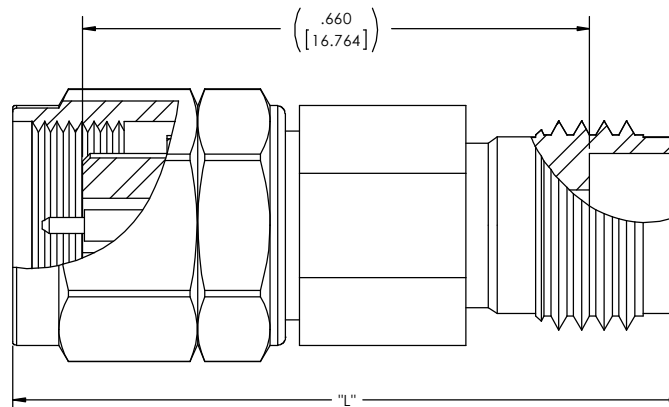
FINISH

HOUSING	PASSIVATED STAINLESS STEEL
CONDUCTOR	GOLD PLATED IAW MIL-PRF-39012

DB VALUE LENGTH "L"
0_20_871±.030
30_911±.030

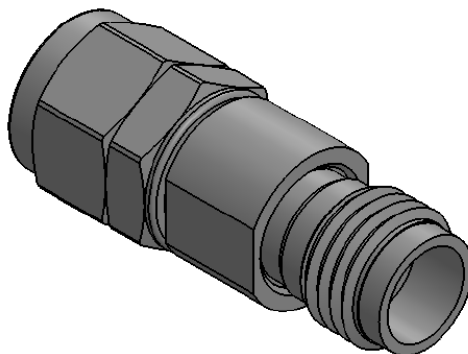
MARKING INSTRUCTIONS

PART LOOKS LIKE PRODUCT IMAGE ABOVE.
PART MARKING ORIENTATION AND FORMAT AS SHOWN.
MARKING TO BE AS LARGE AS POSSIBLE BE CLEAR, READABLE.
"XX" dB VALUE TO BE TWO DIGIT NUMBER AS SPECIFIED ON WORK ORDER.



MARKING AREA
SEE NOTES

PART NO	ATTENUATION
8582-6150-01	1dB
8582-6150-02	2dB
8582-6150-03	3dB
8582-6150-04	4dB
8582-6150-05	5dB
8582-6150-06	6dB
8582-6150-07	7dB
8582-6150-08	8dB
8582-6150-09	9dB
8582-6150-10	10dB
8582-6150-20	20dB
8582-6150-30	30dB



DRAWING PRACTICES PER ANSI Y14.5 DIMENSIONS ARE IN INCHES AND APPLY BEFORE/AFTER PROCESSING	63
SURFACE ROUGHNESS	
FINISH:	
SEE NOTES	
MATERIAL:	
NOTE:	
THIS DRAWING INCORPORATES THIRD ANGLE PROJECTION.	
INTERPRET IAW ANSI Y14.5-1982	

UNLESS OTHERWISE SPECIFIED TOLERANCES IN:	
DECIMALS	
INCH	
(MM)	
.X" .05" [1.27]	
.XX" .03" [.76]	
.XXX" .010" [.25]	
ANGLES ±0°30'	
REMOVE ALL BURRS/SHARP W/ BREAK / R OF .003" TO .0005"	
UNLESS OTHERWISE NOTED DIAS CONCENTRIC <.003 T.I.R.	
DO NOT SCALE PRINT	

DRAWN	DATE
McCORMICK	05/02/14
CHECKED	DATE
McCORMICK	05/02/14
ENG APPR.	DATE
T.KUHN	05/02/14
THESE DRAWINGS AND SPECIFICATIONS ARE THE PROPERTY OF XMA CORP. OR OMNI SPECTRA AND SHALL NOT BE REPRODUCED PART, AS A BASIS FOR THE MANUFACTURE OR SALE OF OTHER ITEMS WITHOUT THE EXPRESS WRITTEN PERMISSION OF XMA CORP.	

		Phone: 603-222-2256 Fax: 603-222-2259 150 Dow Street, Manchester, NH 03101	
TITLE		ATTENUATOR, 2.4mm-m/f, DC-50GHz	
SIZE	CAGE CODE	DRAWING NUMBER	REV
C	3HT76	8582-6150-dB	C
SCALE	PLATED AREA SQ. IN	SHEET 1 OF 1	