

5

4

3

2

1

ELECTRICAL

SPECIFICATIONS

FREQUENCY RANGE DC - 26.5 GHz

VSWR
DC - 4 GHz 1.10:1 MAX
4 - 12.4 GHz 1.20:1 MAX
12.4 - 18 GHz 1.30:1 MAX
18 - 26.5 GHz 1.45:1 MAX

POWER (AVG) 1 WATT MAX
FROM -55°C TO +60°C CASE TEMP -DERATES TO 10% @ 150°C

PEAK POWER 100 WATTS MAX
(100µSec PULSE WIDTH, 0.01% DUTY CYCLE)

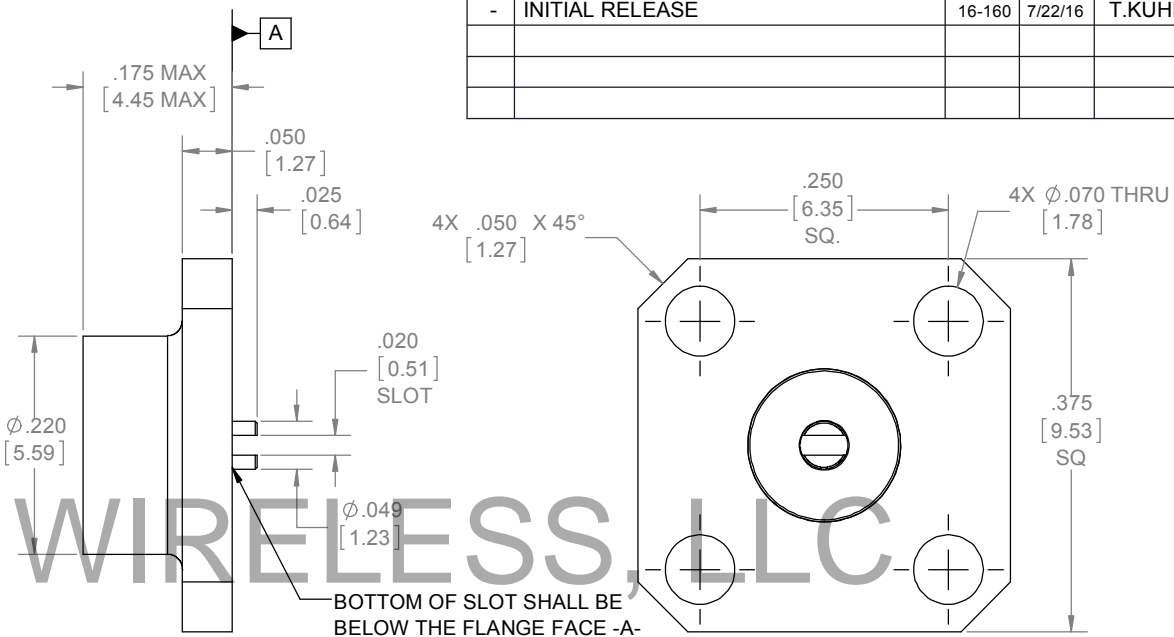
IMPEDANCE 50 OHMS NOM.

MECHANICAL

HOUSING ROHS BRASS, WHITE BRONZE PLATING
CONTACT ROHS BRASS OR BeCu, GOLD PLATED
DIELECTRIC TEFLON/AIR COMPOSITE
RESISTOR EPOXY CAPTIVATED PROTECTED PROPRIETARY THIN FILM

DESIGNED TO MEET ENVIORNMENTALS IAW MIL-DTL-3933

Table with 5 columns: REV, DESCRIPTION, ECO #, DATE, APPROVED. Row 1: - INITIAL RELEASE, 16-160, 7/22/16, T.KUHN



BOTTOM OF SLOT SHALL BE BELOW THE FLANGE FACE -A- SOLDER RESIDUE (ROHS) MAY BE VISIBLE IN SLOT BOTTOM, DOES NOT AFFECT ATTACHMENT TO CIRCUIT TERMINALS

Precision Wireless logo with 'POWERED BY Omni Spectra' and a red stamp: '外来文件受控章' (External Document Control Seal).

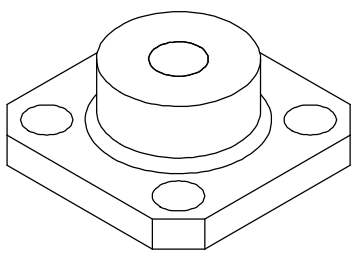


Table with 4 columns: QTY., PART NUMBER, DESCRIPTION, ITEM NO. Row 1: X, 2768-5223-21U, 3/8" FLANGE, 1W, DC-26.5 GHz, .053" BIFURCATED SLOT. Row 2: 1, TA-2768-5223-21U, ASSY, 3/8" FLANGE, 1W, DC-26.5 GHz, .053" BIFURCATED SLOT, UNMARKED, 1

DRAWING PRACTICES PER ANSI-Y-14.5 MIL-STD-100 & 1000
DIMENSIONS ARE IN INCHES AND APPLY BEFORE / AFTER PROCESSING
SURFACE ROUGHNESS 63 µINCHES
FINISH:
SEE NOTE
MATERIAL:
SEE NOTE
NOTE: THIS DRAWING INCORPORATES THIRD ANGLE PROJECTION.
INTERPRET IAW ANSI Y14.5-1982

UNLESS OTHERWISE SPECIFIED TOLERANCES IN:
DECIMALS INCH (MM)
.X" .05" [1.27]
.XX" .03" [.76]
.XXX" .010" [.25]
ANGLES ±0°30'
REMOVE ALL BURRS/SHARP W/ BREAK / R OF .003" TO .0005" UNLESS OTHERWISE NOTED DIAS CONCENTRIC <.003 T.I.R.
DO NOT SCALE PRINT

DRAWN MCCORMICK DATE 9/15/15
CHECKED MCCORMICK DATE 9/15/15
ENG. APPR. T.KUHN DATE 9/15/15

XMA Omni Spectra logo and contact info: Phone: 603-222-2256 Fax: 603-222-2259 150 Dow Street, Manchester, NH 03101
TITLE: 3/8" FLANGE, 1W, DC-26.5 GHz, .053" BIFURCATED SLOT
CAGE CODE: 3HT76
DRAWING NUMBER: 2768-5223-21U
SHEET 1 OF 1

5

4

3

2

1