

# SPECIFICATIONS

## ELECTRICAL

VSWR (MAX.)	
DC-4 GHz	1.10
4- 12 GHz	1.25
12-18 GHz	1.40
POWER	10 WATT AVG. RMS FROM -55°C TO +60°C CASE TEMP DERATES TO 10% @ 150°C
PEAK POWER MAX	100 WATTS, 100mSec PW, 0.1% DUTY CYCLE OR 500 WATTS, 10mSec PW, 0.1% DC

## MECHANICAL

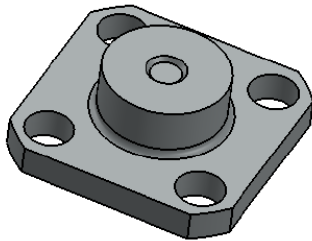
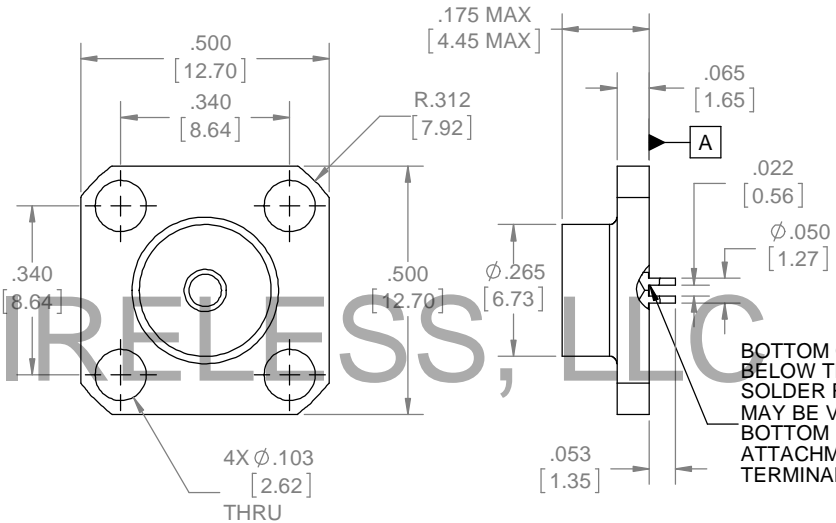
DESIGNED TO MEET ENVIRONMENTALS IAW MIL-DTL-3933	
HOUSING	ROHS BRASS, WHITE BRONZE (AKA TRI-ALLOY OR ALBALLOY) PLATED
CONTACT	ROHS BRASS OR BECU, GOLD PLATED
DIELECTRIC	TEFLON/AIR COMPOSITE - EPOXY CAPTIVATED
RESISTOR IS PROTECTED PROPRIETARY THIN FILM VALUE: 50Ω ±5%	

## MARKING

NONE.



REVISIONS				
REV	DESCRIPTION	ECO #	DATE	APPROVED
B	REDRAWN IN SOLIDWORKS	14-252	7/1/14	T.KUHN



DRAWING PRACTICES PER ANSI-Y14.5 MIL-STD-100 & 1000
DIMENSIONS ARE IN INCHES AND APPLY BEFORE / AFTER PROCESSING
SURFACE ROUGHNESS 63
FINISH:
SEE NOTES
MATERIAL:
SEE NOTES
NOTE: THIS DRAWING INCORPORATES THIRD ANGLE PROJECTION.
INTERPRET IAW ANSI Y14.5-1982

UNLESS OTHERWISE SPECIFIED TOLERANCES IN:
DECIMALS INCH [MM]
.X" .05" [1.27]
.XX" .03" [.76]
.XXX" .010" [.25]
ANGLES ±0°30'
REMOVE ALL BURRS/SHARP W/ BREAK / R OF .003" TO .0005" UNLESS OTHERWISE NOTED DIAS CONCENTRIC <.003 T.I.R.
DO NOT SCALE PRINT

QTY	PART NUMBER	DESCRIPTION	ITEM NO.
1	TA-2068-7002-21	TERMINATION, SMA, FLANGED, DC-18GHz, 10 WATT, 100 WATTS PEAK	1

DRAWN M.TURNER	DATE
CHECKED	DATE
ENG. APPR.	DATE
THESE DRAWINGS AND SPECIFICATIONS ARE THE PROPERTY OF XMA CORP. OR OMNI SPECTRA AND SHALL NOT BE REPRODUCED, COPIED NOR USED - IN WHOLE OR IN PART - AS A BASIS FOR THE MANUFACTURE OR SALE OF OTHER ITEMS WITHOUT THE EXPRESS WRITTEN PERMISSION OF XMA CORP.	

XMA XMA Corp. 150 Dow Street, Manchester, NH 03101	
TERMINATION, SMA, FLANGED, DC-18GHz, 10 WATT, 100 WATTS PEAK, UNMARKED	
SIZE B	CAGE CODE 3HT76
DRAWING NUMBER 2068-7002-21	REV B
SCALE	PLATED AREA SQ. IN
SHEET 1 OF 1	