

# SPECIFICATIONS

## ELECTRICAL:

FREQUENCY RANGE \_\_\_\_\_ 7 kHz - 23 GHz

IMPEDANCE \_\_\_\_\_ 50 OHMS

### INSERTION LOSS

100 kHz - 12.4 GHz \_\_\_\_\_ ±0.50 dB

12.4 - 23 GHz \_\_\_\_\_ ±0.75 dB

BETTER THAN -3 dB BANDWIDTH 7 kHz- 23 GHz

### VSWR

7 kHz - 23 GHz \_\_\_\_\_ 1.35:1 MAX.

VOLTAGE RATING \_\_\_\_\_ 100 VOLTS MAX. (INNER ONLY)

POWER (AVG) \_\_\_\_\_ 2 WATTS  
POWER DERATES LINEARLY FROM +25°C TO <10% @ +125°C

OPERATING TEMP \_\_\_\_\_ -65°C TO 125°C

## MECHANICAL

HOUSING \_\_\_\_\_ PASSIVATED STAINLESS STEEL

CONNECTORS \_\_\_\_\_ PASSIVATED STAINLESS STEEL

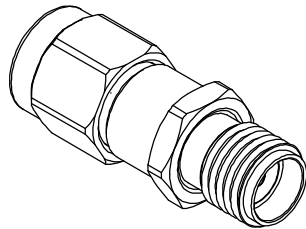
CONTACTS \_\_\_\_\_ GOLD PLATED BERYLLIUM COPPER

CONNECTOR INTERFACES, FINISHES AND MATERIALS COMPLY WITH BOTH  
MIL-PRF-39012 AND MIL-STD-348.

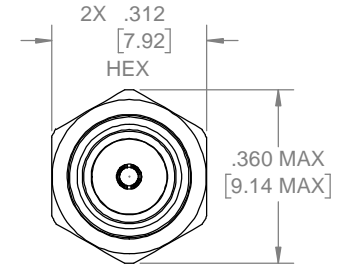
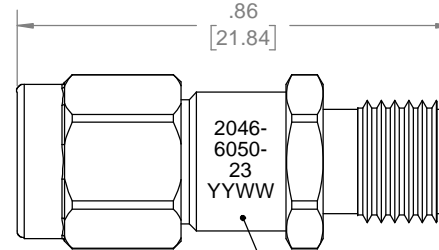
## RoHS COMPLIANT DEVICE

## MARKING

PART LOOKS LIKE PRODUCT IMAGE ABOVE.  
PART MARKING ORIENTATION AND FORMAT AS SHOWN.  
MARKING TO BE AS LARGE AS POSSIBLE, CLEAR, AND READABLE.  
YYWW EQUALS DATE CODE



REVISIONS				
REV	DESCRIPTION	ECO #	DATE	APPROVED
A	ADDED MARKING TO DRAWING	14-303	8/27/14	T.KUHN
B	CORRECTED TITLE & MARKING	15-014	1/16/15	T.KUHN
C	ADDED RoHS COMPLIANT STATEMENT	17-156	10/11/17	T.KUHN




MARKING AREA

QTY.	PART NUMBER	DESCRIPTION	ITEM NO.
X	2046-6050-23	DC BLOCK, SMA-m/f, 7kHz - 23GHz, 2W	
1	TA-2046-6050-23U	ASSY, DC BLOCK, SMA-m/f, 7kHz - 23GHz, 2W, UNMARKED	1

DRAWING PRACTICES PER ANSI-Y-14.5 MIL-STD-100 & 1000
DIMENSIONS ARE IN INCHES AND APPLY BEFORE / AFTER PROCESSING
SURFACE ROUGHNESS μINCHES <b>63</b>
FINISH:
SEE NOTES
MATERIAL:
SEE NOTES
NOTE: THIS DRAWING INCORPORATES THIRD ANGLE PROJECTION.
INTERPRET IAW ANSI Y14.5-1982

UNLESS OTHERWISE SPECIFIED TOLERANCES IN:	DECIMALS	INCH	[MM]
.X"	.05"	[1.27]	
.XX"	.03"	[.76]	
.XXX"	.010"	[.25]	
ANGLES ±0°30'			
REMOVE ALL BURRS/SHARP W/ BREAK / R OF .003" TO .0005"			
UNLESS OTHERWISE NOTED DIAS CONCENTRIC <.003 T.I.R.			
DO NOT SCALE PRINT			

DRAWN <b>MCCORMICK</b>	DATE
CHECKED <b>MCCORMICK</b>	DATE 8/27/14
ENG. APPR. <b>T.KUHN</b>	DATE
THESE DRAWINGS AND SPECIFICATIONS ARE THE PROPERTY OF XMA CORP. OR OMNI SPECTRA AND SHALL NOT BE REPRODUCED, COPIED NOR USED - IN WHOLE OR IN PART - AS A BASIS FOR THE MANUFACTURE OR SALE OF OTHER ITEMS WITHOUT THE EXPRESS WRITTEN PERMISSION OF XMA CORP.	

		Phone: 603-222-2256 Fax: 603-222-2259 150 Dow Street, Manchester, NH 03101	
TITLE			
DC BLOCK, SMA-m/f, 7kHz - 23GHz, 2W			
SIZE B	CAGE CODE 3HT76	DRAWING NUMBER 2046-6050-23	REV C
SCALE	PLATED AREA SQ. IN	SHEET 1 OF 1	