

TERMINATION

SMA, DC - 6 GHz, 1 Watt

SPECIFICATIONS:

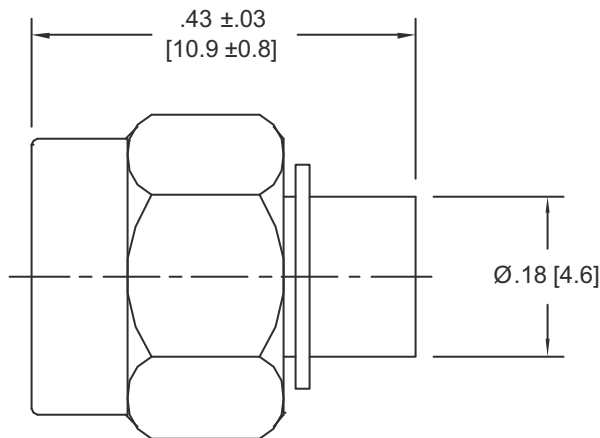
Models: TS398M

RoHS
Compliant

Electrical:	
Frequency Range _____	DC - 6 GHz
VSWR _____	
DC - 3 GHz _____	1.15:1 Max.
3 - 6 GHz _____	1.20:1 Max.
Impedance _____	50 ±1 Ohms
Input Power _____	1 Watt Avg. @ +25°C
	Derated Linearly to 10% @ +125°C
Peak Power _____	1 kW Max.
	(5uSec Pulse, .05% Duty Cycle)
Temperature Coefficient _____	± 200 ppm / °C
Operating Temperature Range _____	-55°C to +125°C
Mechanical:	
SMA Connectors _____	White Bronze Plated Brass
	Mates with MILSTD-348
Coupling Nut _____	White Bronze Plated Brass
Conductor _____	Gold Plated Brass



Model Number: **TS398M**



Note:

Unit Shown, and Dimensions Occur, with Coupling Nut Biased Fully Forward (as Installed).

Note: Dimensions in Brackets are Expressed in Millimeters and are for Reference Only. Design, specifications are subject to change without notice. Contact factory for technical specifications before purchasing and/or use.

TS398M: REV B



Aeroflex / Inmet, Inc. • 300 Dino Drive, Ann Arbor, MI 48103 • U.S.A.
888-244-6638 or 734-426-5553 • FAX: 734-426-5557
www.aeroflex-inmet.com • inmet-sales@eroflex.com