

# TERMINATIONS

SMA, DC - 18 GHz, 10 Watts

## SPECIFICATIONS:

Models: TSXXXM-10W, TSXXXF-10W

**RoHS**  
Compliant

**AEROFLEX**  
A passion for performance.

### Electrical:

Frequency Range \_\_\_\_\_ DC - 18 GHz

Standard Freq. Values \_\_\_\_\_ 6, 12.4 & 18 GHz

VSWR

DC - 6 GHz \_\_\_\_\_ 1.20:1 Max.

6 - 12.4 GHz \_\_\_\_\_ 1.30:1 Max.

12.4 - 18 GHz \_\_\_\_\_ 1.40:1 Max.

Impedance \_\_\_\_\_ 50 Ohms

Input Power \_\_\_\_\_ 10 Watts Avg. @ +25°C  
Derated Linearly to 2 Watts @ +125°C

Peak Power \_\_\_\_\_ 500 Watts Max.  
(5uSec Pulse, .05% Duty Cycle)

Operating Temp Range \_\_\_\_\_ -65°C to +125°C

### Mechanical:

SMA Connectors \_\_\_\_\_ Passivated Stainless Steel

Mates with MILSTD-348

Housing \_\_\_\_\_ Anodized Aluminum

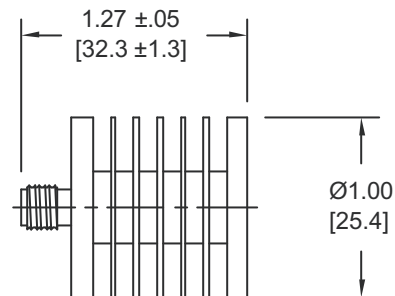
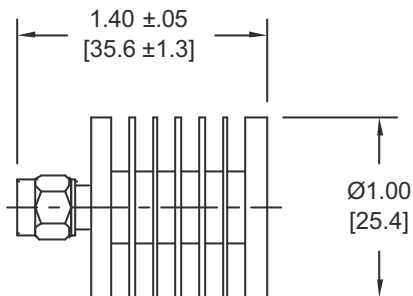
Conductors \_\_\_\_\_ Gold Plated Beryllium Copper

Model Number: **TSXXXM-10W**

SMA Male Connector

Model Number: **TSXXXF-10W**

SMA Female Connector



## HOW TO ORDER:

Model Number: **TSXXX<sup>Y</sup>-10W**

Frequency Range \_\_\_\_\_ Connector Configuration

060 = DC - 6 GHz

120 = DC - 12.4 GHz

180 = DC - 18 GHz

M = Male

F = Female

### Ordering Examples:

Model Number: **TS120M-10W**

DC - 12.4 GHz; SMA Male

Model Number: **TS060F-10W**

DC - 6 GHz; SMA Female

Model Number: **TS180M-10W**

DC - 18 GHz; SMA Male

Note: Dimensions in Brackets are Expressed in Millimeters and are for Reference Only.

TS180-10W: REV F

**AEROFLEX**  
INMET

Aeroflex / Inmet, Inc. • 300 Dino Drive, Ann Arbor, MI 48103 • U.S.A.  
888-244-6638 or 734-426-5553 • FAX: 734-426-5557  
www.aeroflex-inmet.com • inmet-sales@eroflex.com