

TERMINATIONS

Type N, DC - 18 GHz, 5 Watts

SPECIFICATIONS:

Models: TNXXXM-5W, TNXXXF-5W

RoHS
Compliant

AEROFLEX
A passion for performance.

Electrical:

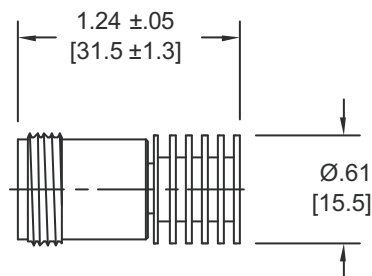
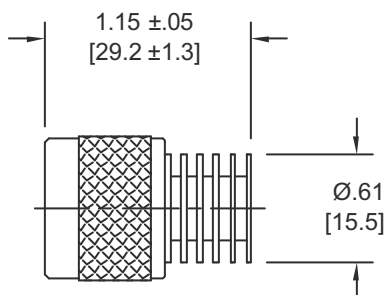
Frequency Range _____ DC - 18 GHz
Standard Freq. Values _____ 6, 12.4 & 18 GHz
VSWR
DC - 4 GHz _____ 1.10:1 Max.
4 - 8 GHz _____ 1.15:1 Max.
8 - 12.4 GHz _____ 1.20:1 Max.
12.4 - 18 GHz _____ 1.25:1 Max.
Impedance _____ 50 Ohms
Input Power _____ 5 Watts Avg. @ +25°C
Derated Linearly to 1 Watts @ +125°C
Operating Temp Range _____ -65°C to +125°C

Mechanical:

Type N Connectors _____ Passivated Stainless Steel
Mates with MIL-STD-348
Housing _____ Anodized Aluminum
Conductors _____ Gold Plated Beryllium Copper

Model Number: **TNXXXM-5W**
Type N Male Connector

Model Number: **TNXXXF-5W**
Type N Female Connector



HOW TO ORDER:

Model Number: **TNXXXY-5W**

Frequency Range _____ Connector Configuration
060 = DC - 6 GHz M = Male
120 = DC - 12.4 GHz F = Female
180 = DC - 18 GHz

Ordering Examples:

Model Number: **TN120M-5W**
DC - 12.4 GHz; Type N Male

Model Number: **TN060F-5W**
DC - 6 GHz; Type N Female

Model Number: **TN180M-5W**
DC - 18 GHz; Type N Male

Note: Dimensions in Brackets are Expressed in Millimeters and are for Reference Only.
Units that operate over a more specific band as well as units which offer very low return loss (VSWR) over a specific or entire frequency range are also available.

TN180-5W: REV G

AEROFLEX
INMET

Aeroflex / Inmet, Inc. • 300 Dino Drive, Ann Arbor, MI 48103 • U.S.A.
888-244-6638 or 734-426-5553 • FAX: 734-426-5557
www.aeroflex-inmet.com • inmet-sales@eroflex.com