

TERMINATIONS

Type N, DC - 18 GHz, 10 Watts

SPECIFICATIONS:

Models: TNXXXM-10W, TNXXXF-10W

RoHS
Compliant

AEROFLEX
A passion for performance.

Electrical:

Frequency Range _____ DC - 18 GHz
Standard Freq. Values _____ 6, 12.4 & 18 GHz
VSWR

DC - 6 GHz _____ 1.20:1 Max.
6 - 12.4 GHz _____ 1.30:1 Max.
12.4 - 18 GHz _____ 1.40:1 Max.

Impedance _____ 50 Ohms
Input Power _____ 10 Watts Avg. @ +25°C

Derated Linearly to 2 Watts @ +125°C

Peak Power _____ 250 Watts Max.
(5uSec Pulse, .05% Duty Cycle)

Operating Temp Range _____ -65°C to +125°C

Mechanical:

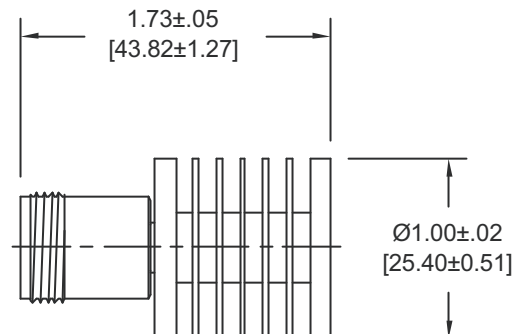
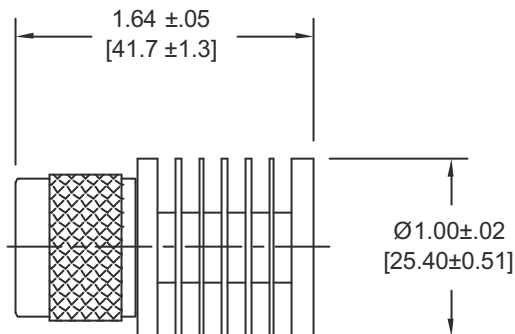
Type N Connectors _____ Passivated Stainless Steel
Mates with MILSTD-348

Housing _____ Anodized Aluminum

Conductors _____ Gold Plated Beryllium Copper

Model Number: **TNXXXM-10W**
Type N Male Connector

Model Number: **TNXXXF-10W**
Type N Female Connector



HOW TO ORDER:

Model Number: **TNXXX^Y-10W**

Frequency Range	Connector Configuration
060 = DC - 6 GHz	M = Male
120 = DC - 12.4 GHz	F = Female
180 = DC - 18 GHz	

Ordering Examples:

Model Number: **TN120M-10W**
DC - 12.4 GHz; Type N Male

Model Number: **TN060F-10W**
DC - 6 GHz; Type N Female

Model Number: **TN180M-10W**
DC - 18 GHz; Type N Male

Note: Dimensions in Brackets are Expressed in Millimeters and are for Reference Only.

TN 180-10W: REV G



Aeroflex / Inmet, Inc. • 300 Dino Drive, Ann Arbor, MI 48103 • U.S.A.
888-244-6638 or 734-426-5553 • FAX: 734-426-5557
www.aeroflex-inmet.com • inmet-sales@aeroflex.com