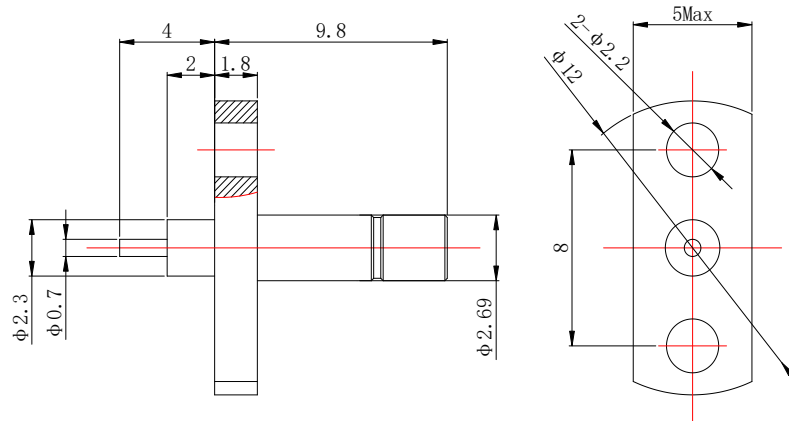


SSMB(MALE) FOR PCB

SSMB-JFD102



*Dimensions are in mm

Configuration

Connector Type	SSMB Male
Connector Impedance	50 Ohms
Connector Polarity	Standard
Body Style	Straight
Connector Mount Method	2 Hole Flange
Cable Attachment Method	Contact

Electrical Specifications

Frequency	DC to 6GHz
Insertion Loss (dB)	$\leq 0.1 \times \sqrt{f_{\text{GHz}}}$
VSWR /Return Loss	≤ 1.25 to 6 GHz

Materials Information

Center Contact	Grass Gold Plated
Out Contact	Grass Gold Plated
Body	Grass Gold Plated
Dielectric	PTFE

Environmental Data

Temperature Range	-55°C to +165°C
2002/95/EC(RoHS)	Compliant

While the information has been carefully compiled to the best of our knowledge, nothing is intended as representation or warranty or our part and no statement herein shall be construed as recommendation to infringe existing patents. In the effort to improve our products, we reserve the right to make changes judged to be necessary.