

RF SWITCH



50Ω 4 Way SMA RF Pin Switch

GP1S4-5-12T

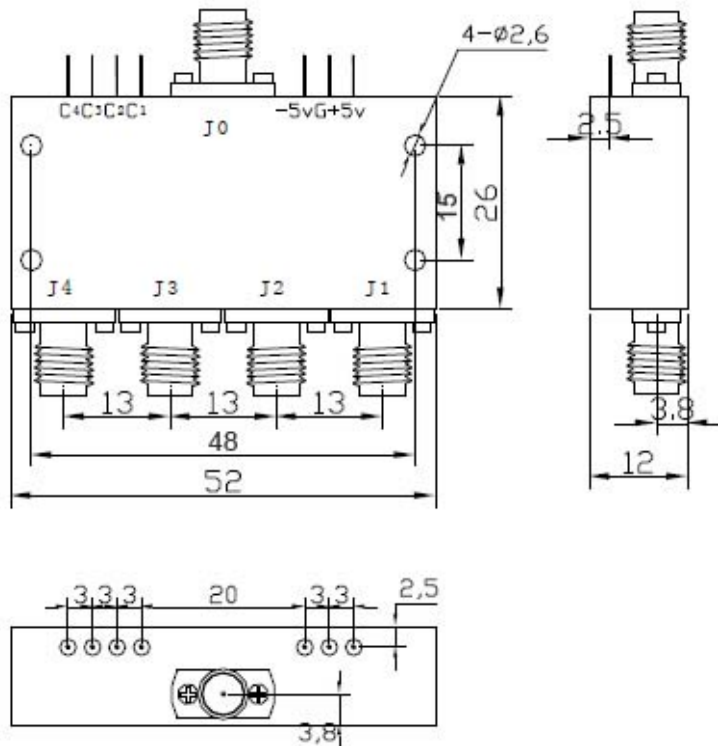
Electrical Specifications

Frequency Range, GHz	8~12
Impedance, Ohms	50
Insertion Loss Max.[dB]	1.9
VSWR Max.	1.6
Isolation Min.[dB]	60
CW Power Max.[W]	0.5
Supply Voltage.[V]	+5 , -5
Swiching Time Max.[ns]	50

Mechanical Specifications

Conn.Type	SMA(F)
Operating Range deg.[C]	-30 ~ 65

Outline Drawing



Notes