

# DC BLOCKS

2.9mm, 10 MHz - 40 GHz, 200 Volts

## SPECIFICATIONS:

Models: 8141A, 8144A

**RoHS**  
Compliant

**AEROFLEX**  
A passion for performance.

### Electrical:

Frequency Range \_\_\_\_\_ 10 MHz - 40 GHz  
VSWR \_\_\_\_\_ 1.45:1 Max.  
Impedance \_\_\_\_\_ 50 Ohms  
Insertion Loss \_\_\_\_\_ 0.75 dB Max.  
Voltage Rating \_\_\_\_\_ 200 Volts Max.  
Operating Temp. Range \_\_\_\_\_ -65°C to +125°C

### Mechanical:

Connectors \_\_\_\_\_ Passivated Stainless Steel  
Mates both Mechanically and Electrically with  
SMA, K\* and 3.5mm Series Connectors  
Conductors \_\_\_\_\_ Gold Plated Beryllium Copper  
Housings:  
Inner Only Blocks \_\_\_\_\_ Passivated Stainless Steel  
Inner/Outer Blocks \_\_\_\_\_ High Temperature Plastic

Typical low Frequency Performance

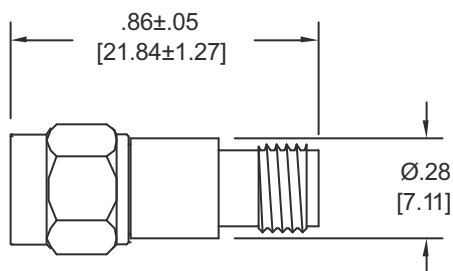
Frequency Range	Insertion Loss	VSWR
1 kHz	24dB	-
16 kHz	3dB	6:1
50 kHz	0.5dB	2:1
110 kHz	0.1dB	1.35:1

\* K is a Trademark of Anritsu Corp.

Model Number: **8141A**

2.9mm Male to Female; Inner Only

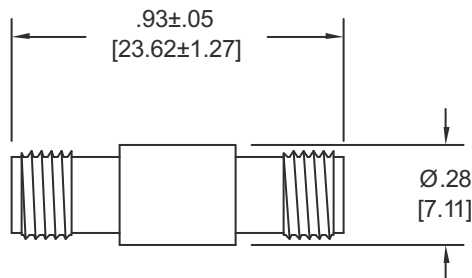
Weight \_\_\_\_\_ 5.3 Grams Max.



Model Number: **8144A**

2.9mm Female to Female; Inner Only

Weight \_\_\_\_\_ 7.2 Grams Max.



Note: Dimensions in Brackets are Expressed in Millimeters and are for Reference Only.  
Design, specifications are subject to change without notice. Contact factory for technical specifications before purchasing and/or use.

8141A: REV -

**AEROFLEX**  
INMET

Aeroflex / Inmet, Inc. • 300 Dino Drive, Ann Arbor, MI 48103 • U.S.A.  
888-244-6638 or 734-426-5553 • FAX: 734-426-5557  
www.aeroflex-inmet.com • inmet-sales@aeroflex.com