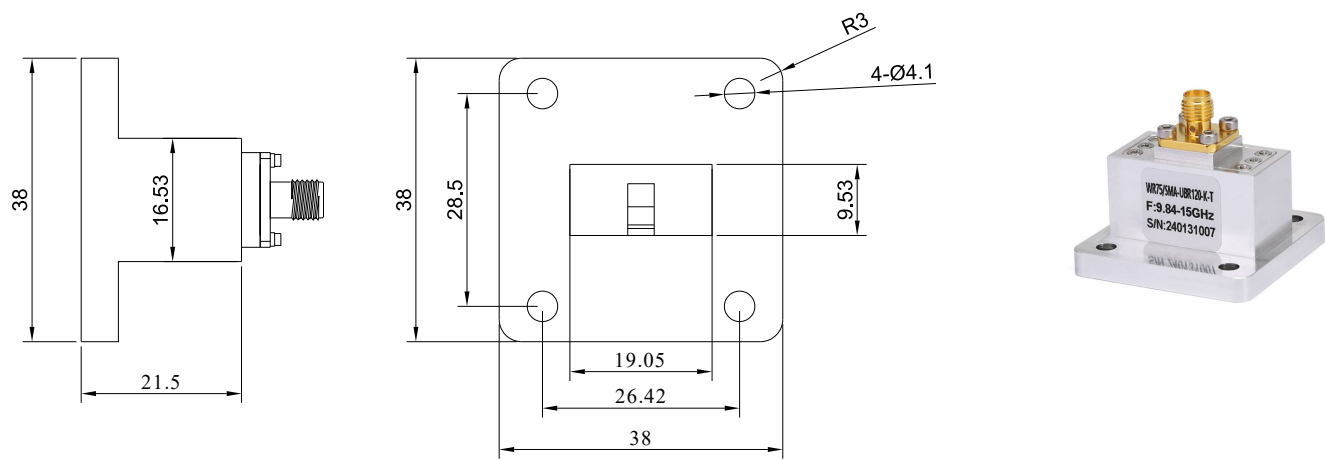


WR-75 to SMA Female Straight Waveguide to Coax Adapters with UBR120 Flange,9.84-15GHz

WR75/SMA-UBR120-K-T



Dimensions are in mm

Product Configuration

Body Style	Straight
Flange Designation	UBR120
Waveguide Size	WR-75
Connector Series	SMA
Connector Polarity	Standard
Connector Gender	Female
Connector Impedance (Ohm)	50

Electrical Specifications

VSWR	1.25
Insertion Loss	≤0.25
Frequency Range	9.84-15GHz

Mechanical Data

Weight	38
Body Material	Aluminum

Enviromental Specifications

RoHS Compliant	Yes
Operating Temperature Range	-30 °C to +70 °C

NOTE:information herein is believed by Gwave to be accurate.However,Gwave assumes no responsibility for any omissions or errors inaccuracies for its use or for any infringements of patents or other rights of third parties that may result from its use.Data is intended for informational purpose only and does not constitute a contract of sale or any express or implied warranty,including any warranty of merchat ability or fitness for a particular purpose.