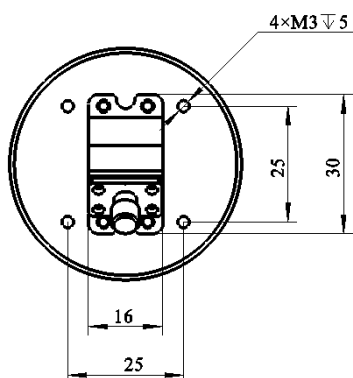
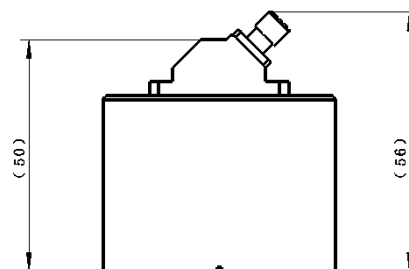
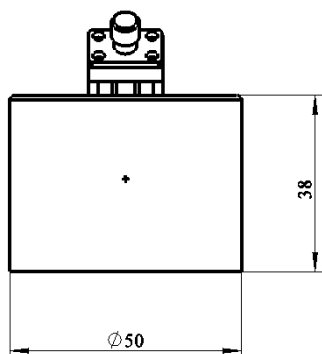


# PLANAR HELICAL ANTENNA



50 Ω SMA PLANAR HELICAL ANTENNA  
(2~18GHZ)

**GPSA-020-180-L-SMF-6**



\*Dimensions are in mm

## Electrical Specifications

Frequency	2 to 18 GHz
Impedance, Ohms	50
Gain (dBi)	6
Polarization	Left handed circular
VSWR /Return Loss	<2.5
Beam Width	≥55°
Off-axis Beam	≤ ± 15°

## Materials Specifications

Conn.Type	SMA(F)
-----------	--------

## Environmental Data

Temperature Range	-40°C to +105°C
2011/65/EU(RoHS)	Compliant

While the information has been carefully compiled to the best of our knowledge, nothing is intended as representation or warranty on our part and no statement herein shall be construed as recommendation to infringe existing patents. In the effort to improve our products, we reserve the right to make changes judged to be necessary.

# PLANAR HELICAL ANTENNA



50  $\Omega$  SMA PLANAR HELICAL ANTENNA  
(2~18GHz)

**GPSA-020-180-L-SMF-6**

