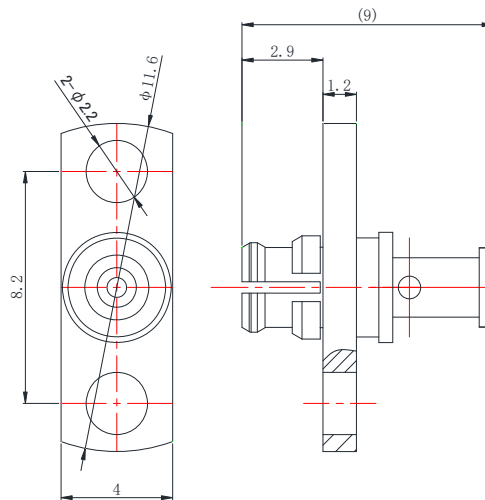


**GPO (FEMALE) STRAIGHT JACK  
WITH 2HOLE FLANGE**
**GPO-KFB1**


\*Dimensions are in mm

### Configuration

Connector 1 Type	GPO Female
Connector 1 Impedance	50 Ohms
Connector 1 Polarity	Standard
Body Style	Straight
Connector Mount Method	2 Hole Flange
Connector 2 Interface Type	047 Series
Attachment Method	Solder

### Electrical Specifications

Frequency	DC to 40 GHz
Insertion Loss (dB)	$\leq 0.05 \times \sqrt{f_{\text{GHz}}}$
Return loss/VSWR	$\leq -14\text{dB}$ to 40GHz

### Materials Information

Centre Contact	CuBe Gold Plated
Outer Contact	CuBe Gold Plated
Body	Grass Gold Plated
Dielectric	PTFE

### Environmental Data

Temperature Range	-40°C to +125°C
2002/95/EC(RoHS)	Compliant

While the information has been carefully compiled to the best of our knowledge, nothing is intended as representation or warranty on our part and no statement herein shall be construed as recommendation to infringe existing patents. In the effort to improve our products, we reserve the right to make changes judged to be necessary.