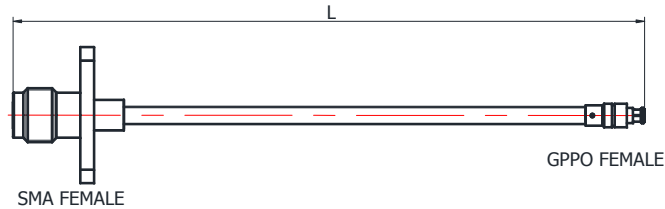
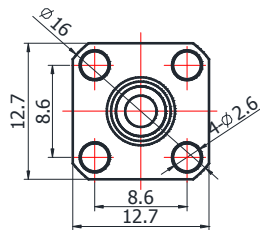


086 SERIES, SEMI-FLEX CABLE ,  
SMA(FEMALE)- GPPO(MINI-SMP)(FEMALE)

GA711-SMFFGPPF-XXX



\* Label and Shrinking tube design depend on customer's request.

## Configuration

Connector 1 Type	SMA Female
Connector 1 Body Style	Straight
Body Material and Plating	Brass Gold Plated
Connector 1 Mount Method	None
Connector 2 Type	GPPO(Mini-SMP) Female
Connector 2 Body Style	Straight
Body Material and Plating	Brass Gold Plated
Connector 2 Mount Method	None
Cable Type	GUT-085-Form

## Electrical Specifications

Impedance	50 $\Omega$
Frequency	DC to 26.5 GHz
Return Loss/VSWR	1.35 to 18 GHz
Phase Stability vs. Flexure	N/A
Amplitude Stability	N/A
Shielding Effectiveness	<-100dB @ 1GHz
Phase Matching	On Request
Signal Delay	On Request
Power Handling	89Watt @ 3GHz at Sea Level,VSWR1.0

## Environmental Data

Temperature Range	-40°C to +165°C
2002/95/EC(RoHS)	Compliant

## Cable Specifications

Center Conductor	Silver plated copper
Dielectric	Solid extruded PTFE
Jacket	None
Capacitance(pF/m)	94
Velocity of propagation(%)	70
Min. bending radius(mm)	6
Jacket Diameter(mm)	2.2

## Part Number List

Part Number	Length [mm]	Insertion Loss ≤(dB)			
		3GHz	5GHz	10GHz	18GHz
GA711-SMFFGPPF-1000	1000±15	1.33	1.92	2.71	3.65
GA711-SMFFGPPF-500	500±10	0.785	0.95	1.42	2.15
GA711-SMFFGPPF-300	300±10	0.53	0.65	0.96	1.49
GA711-SMFFGPPF-200	200±10	0.404	0.51	0.74	1.16
GA711-SMFFGPPF-100	100±10	0.27	0.35	0.52	0.83

While the information has been carefully compiled to the best of our knowledge, nothing is intended as representation or warranty on our part and no statement herein shall be construed as recommendation to infringe existing patents. In the effort to improve our products, we reserve the right to make changes judged to be necessary.