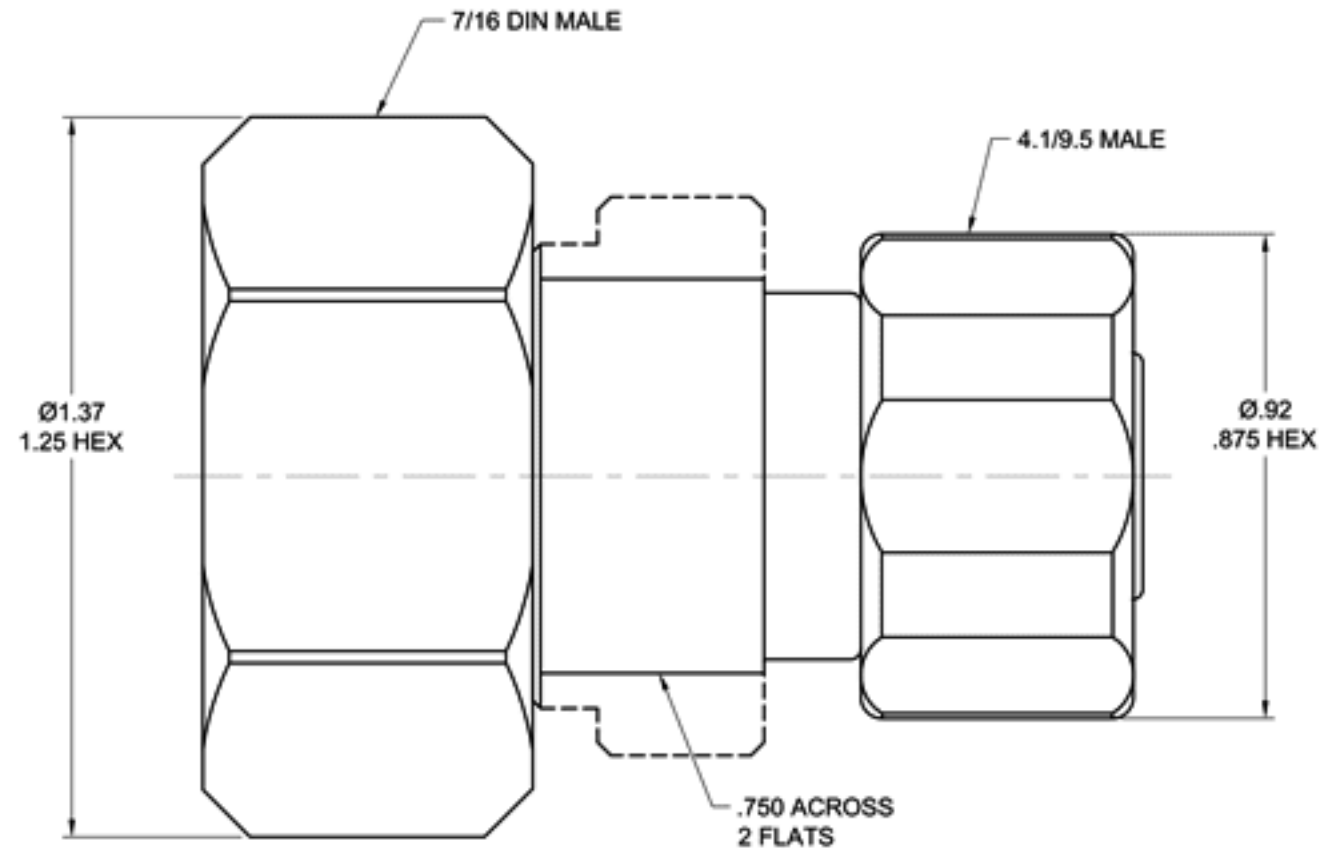


ELECTRICAL SPECIFICATIONS


FREQUENCY RANGE (GHz):	Hz - 8.0
IMPEDANCE (NOMINAL):	50 Ohms
VSWR:	
Hz - 6.0 GHz:	1.15:1 TYP/ 1.20:1 MAX
6.0 - 8.0 GHz:	1.20:1 TYP/ 1.25:1 MAX
PASSIVE INTERMODULATION DISTORTION:	LESS THAN -160 dBc, -165 dBc TYPICAL WITH 2 x 20 WATT TONES

MECHANICAL SPECIFICATIONS

CONNECTORS:	BRASS, ALBALOY PLATE
CONNECTOR PINS:	BRASS, SILVER PLATE
CONNECTORS INTERFACE TORQUE:	
7/16 DIN MALE:	19 ± 1 ft.lbs.
4.1/9.5 MALE:	8 ± 0.5 ft.lbs.
INSULATORS:	PTFE, VIRGIN ELECTRICAL GRADE
TEMPERATURE:	-65°C TO +85°C
WEIGHT (NOMINAL):	4.15 oz



This document gives only a description of the product(s) and shall not form part of any contract. Please contact a MECA Applications Engineer for the most current specification drawing.

MATERIAL: SEE ABOVE		UNLESS OTHERWISE SPECIFIED, DIMENSIONS ARE IN INCHES		 ELECTRONICS, INC. DENVER, NEW JERSEY e-MECA.com
FINISH: SEE ABOVE		TOLERANCES 2 PLACES: ±.01 3 PLACES: N/A ANGLES: N/A		
DRAWN:	DATE:	TIR: N/A		TITLE ADAPTER 7/16 DIN MALE TO 4.1/9.5 MALE
APPROVED:	DATE:	SCALE: NTS	SIZE A	
SHEET: 1 OF 1		CAGE CODE NO. 22424	DRAWING NO. ADM-MDM	

LTR	PG	DESCRIPTION	DATE	DR	APP
-----	----	-------------	------	----	-----