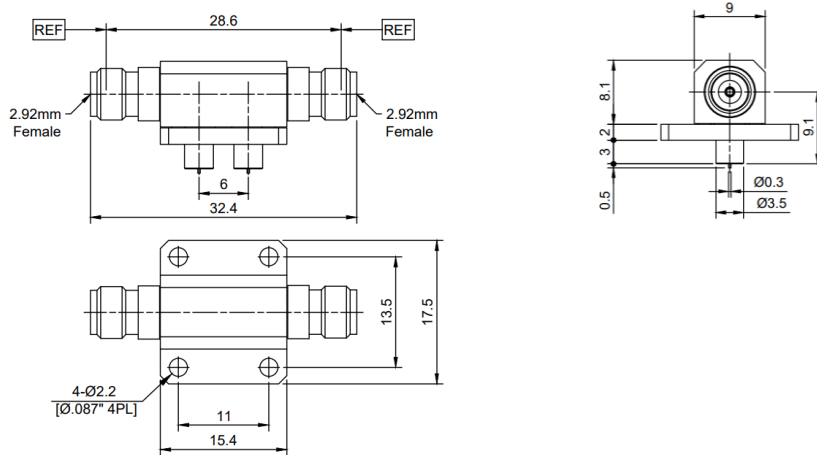


**2.92MM(FEMALE)-2.92MM(FEMALE)
WITH 4 HOLE FLANGE**
2.92-KFK-A


*Dimensions are in mm

Configuration	
Connector 1 Type	2.92mm Female
Connector 1 Impedance	50 Ohms
Connector 1 Polarity	Standard
Connector 2 Type	2.92mm Female
Connector 2 Impedance	50 Ohms
Connector 2 Polarity	Standard
Connector Mount Method	4 Hole Flange
Adapter Body Style	Straight
Electrical Specifications	
Frequency	DC to 40 GHz
Insertion Loss (dB)	$\leq 0.05 \times \text{sqrt}(f_GHz)$
VSWR /Return Loss	1.35 to 40 GHz
Materials Information	
Center Contact	CuBe Gold Plated
Outer Contact	Stainless Steel
Body	Brass Nickel Plated
Dielectric	PTFE&PEI
Environmental Data	
Temperature Range	-55°C to +165°C
2011/65/EU(RoHS)	Compliant

While the information has been carefully compiled to the best of our knowledge, nothing is intended as representation or warranty on our part and no statement herein shall be construed as recommendation to infringe existing patents. In the effort to improve our products, we reserve the right to make changes judged to be necessary.